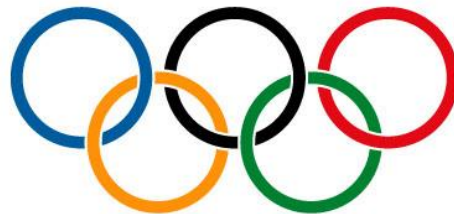


torino 2006

TM





Olympic Transport

Torino 2006

XX Olympic Winter Games

Torino, February 2006

Operational Tasks

Host City Contract

- Ensure a safe, reliable and efficient transport service to the main client groups (**Athletes and Officials, Olympic Family, Media and Sponsors**)
- Ensuring an effective transport service to **TOROC Staff and Volunteers**
- Developing integration measures between public and private transport to **facilitate the spectators' transport**
- **Coordinating the Olympic transport system with the pre-existing transport systems** of the metropolitan and mountain areas.



TOROC Transport Mission

- To guarantee efficient and safe transport during the Olympic and Paralympic Games
- To make the Olympic transport compatible with the background transport of the involved areas
- To apply the service and quality references contained in the IOC specifications

Ensure safe, reliable, efficient and customer oriented transport services for all clients.



Olympic Clients

Who are they and how many?



2.633 athletes, travelling between 3 Olympic Villages and 14 Venues

2.500 technical delegates, accommodated in hotels, "self driving" vehicles allocated by TOROC

20.000 volunteers

12.000 contractors

1.600 staff

using public transport (city) or a dedicated network (mountain)

11.000 journalists and media, travelling between the Media Villages (or hotels), the Media Centre and the Venues

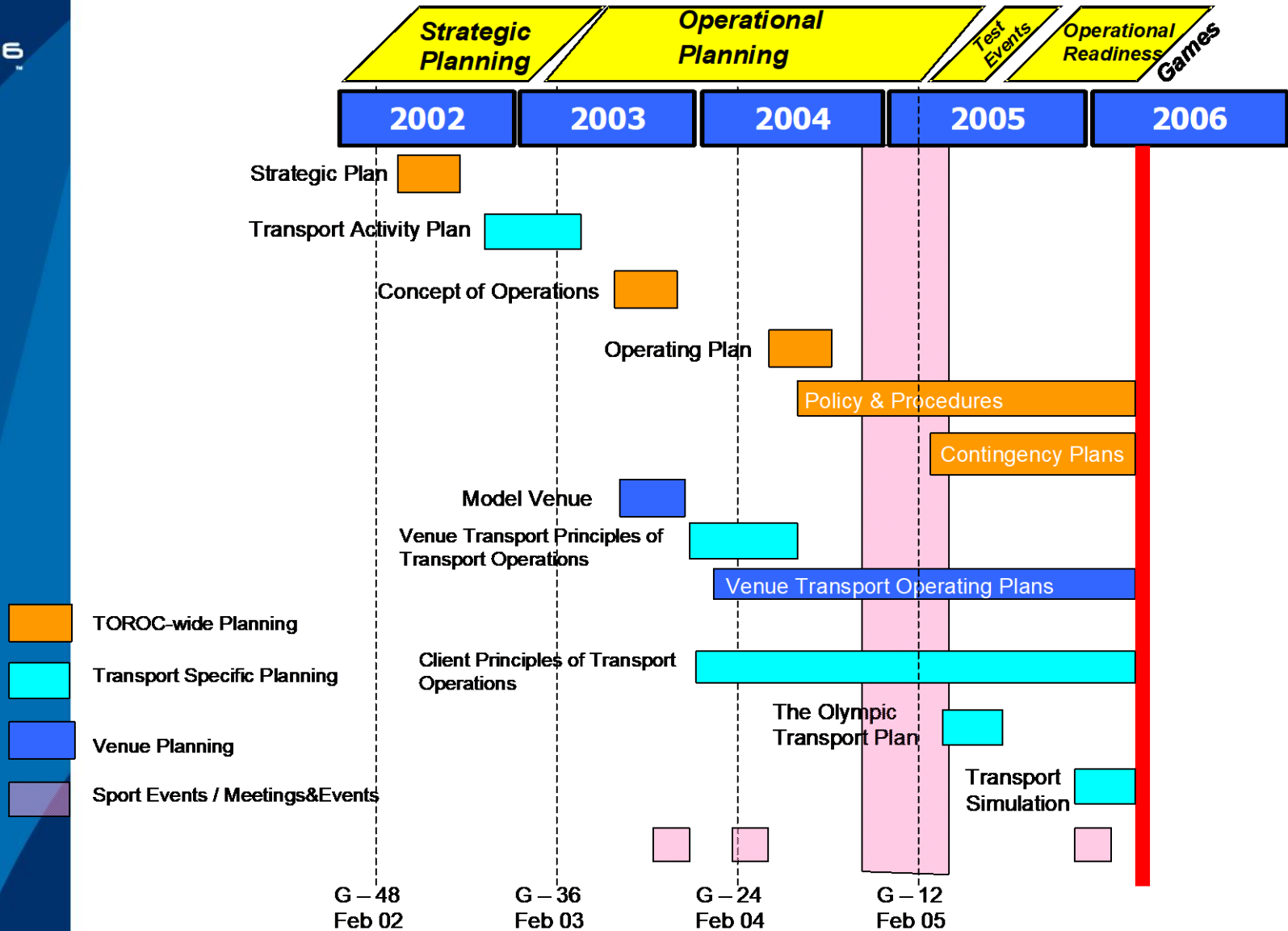
3.000 IOC, NOC and Federations, travelling by car (T1-2-3) or bus (T3 mountain)

6.000 sponsors guests, participating to the Sponsor Coach program

1 million spectators...

...and many tourists!

Transport Core Planning Steps



Transport Strategy Mountain – Filters





Transport Strategy

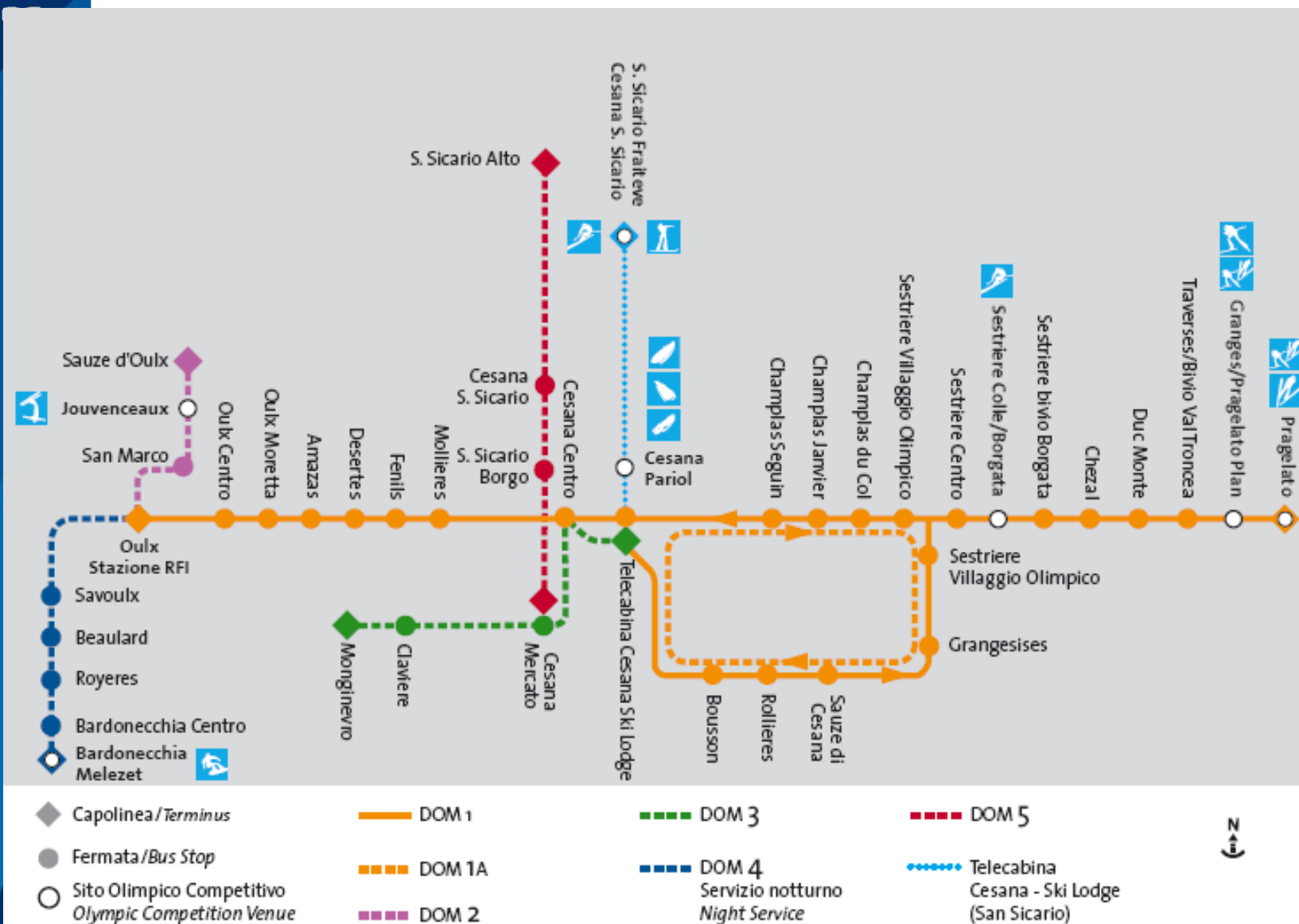
Mountain – Filters

- ✓ Services (bus and fleet) for accredited clients => **A32**
- ✓ **Filters** to protect Olympic Transport from background traffic (residents and tourists-spectators)
- ✓ Free public transport (**Dorsale**) inside the Filters Area (for accredited and non-accredited clients), with the aim to support resident movements
- ✓ **Park&Ride** and **Train&Ride** dedicated to Spectators (on-line booking service available for P&R)
- ✓ **Cooperation** with France to support spectators/volunteers travelling through Briançon-Monginevro



Mountain Strategy

The "Dorsale" Mountain Service



Investments to improve the pre-existing infrastructures



AGENZIA TORINO 2006:

realizes all the Olympic definitive structures.

ROAD INFRASTRUCTURES:

Public investments (Law 285/00): **800 ml/€**

- 18 interventions on former State roads
- 8 interventions on Provincial roads
- 2 interventions on highway networks
- 25 km of new roads
- 150 km of roads improvements

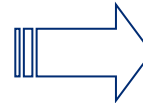
TOC – Traffic Operation Center

TOC principal tasks:

1. Monitor, control and manage the traffic in any operative condition (normal and emergency)
2. Collect, organize and circulate useful information to different subjects



Telematic systems
along the network:
*traffic sensors,
cameras and VMS*



Police, Road Owners
and TOC **Operative
Centres**



**Traffic management and real
time information to users**

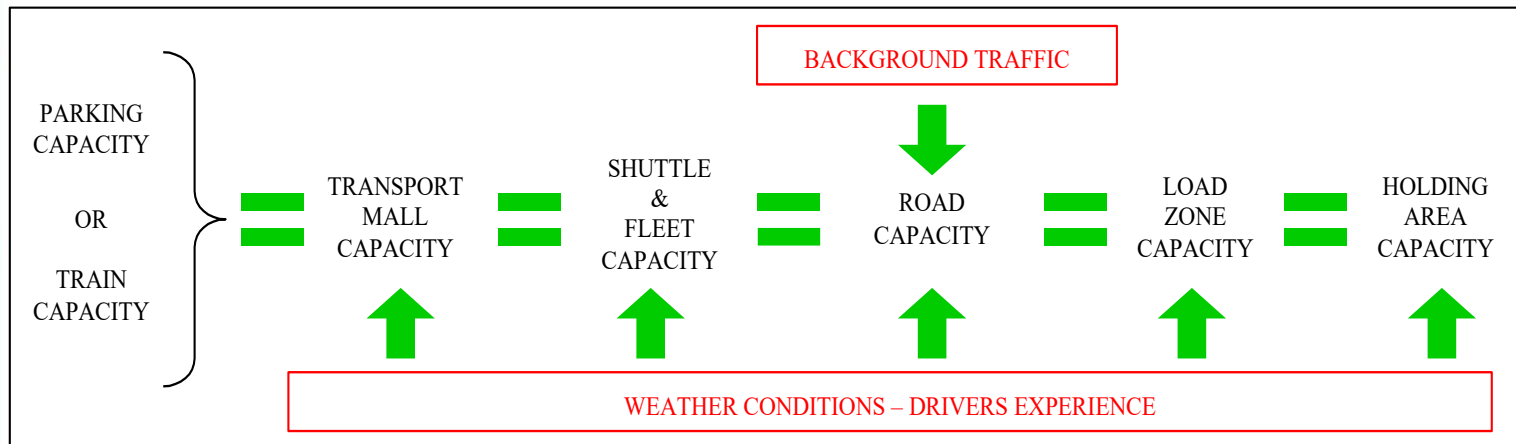
Transport Strategy

City - Olympic Lanes

- 75 Km total
- 60 Km Olympic Lanes
- 15 Km on public transport lanes

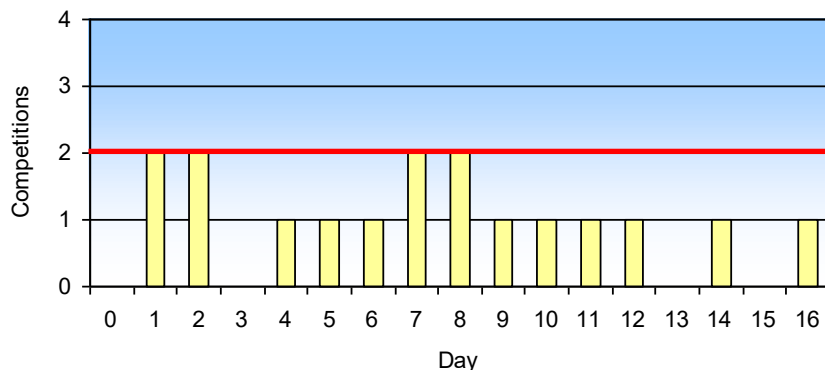


Transport Capacity

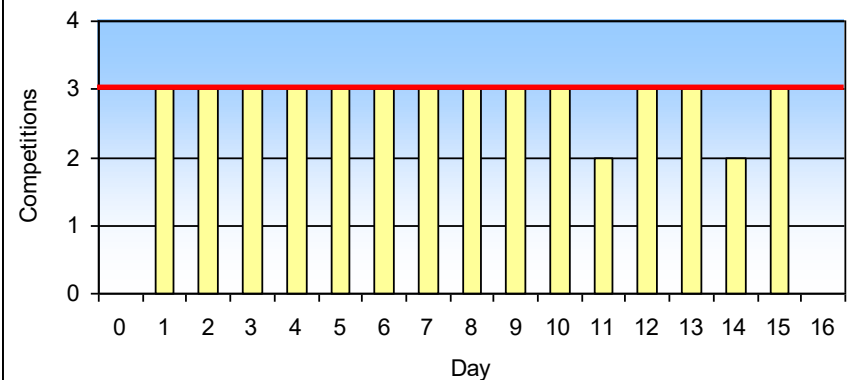


Transport Guidelines – Competition Schedule

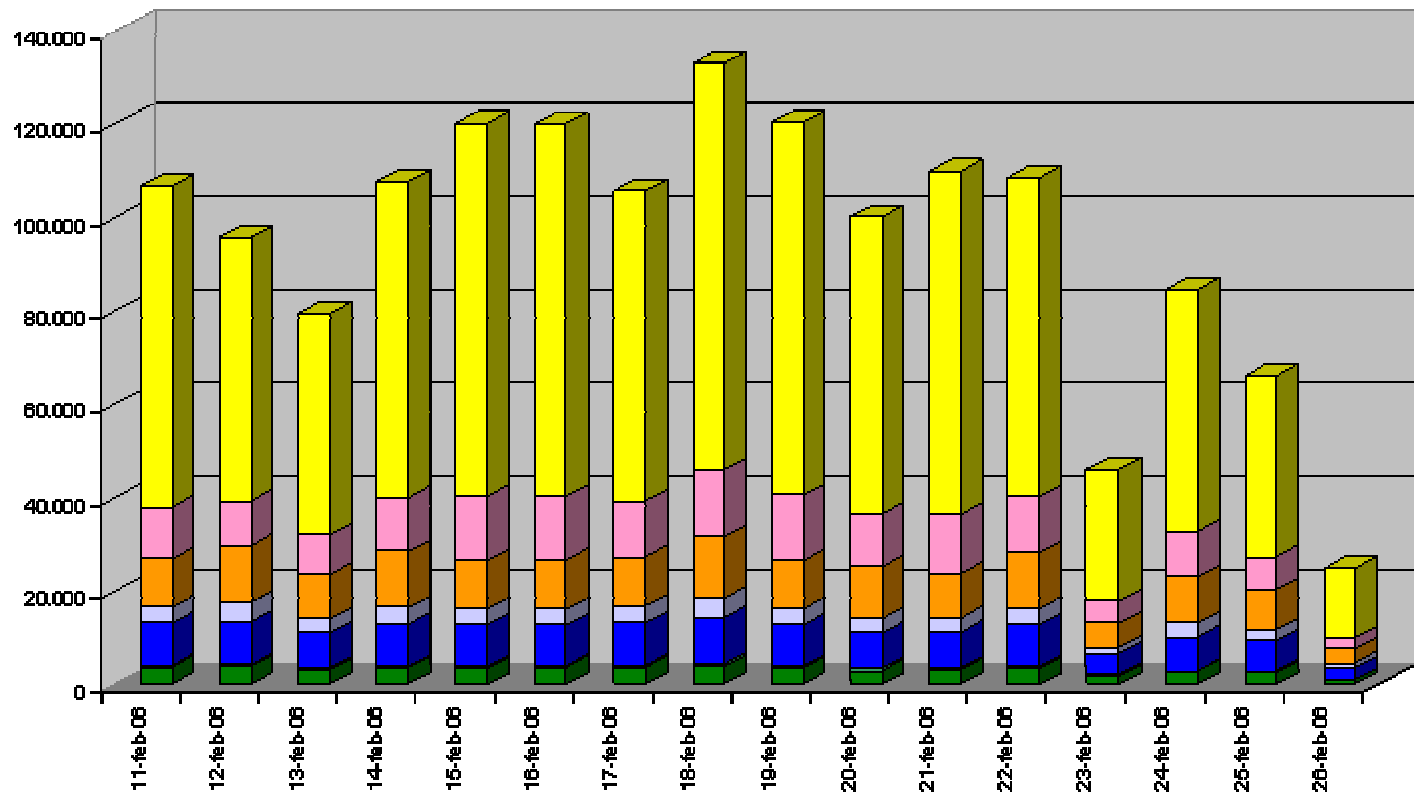
Competitions per day in Val Chisone



Competitions per day in Val di Susa



Transport Demand - Total



Contingency Plans

Code	Title
CP_024/01	Multiple counterfeit Resident Permits / Olympic VAPPs
CP_033/01	Shortage of Buses, Fleet and/or Drivers causing operational problems for Olympic Transport system
CP_034/01	Overcrowded Roadways or Road Closure: Olympic Family experiences significant transport delays
CP_035/01	Inability of mass transit systems to deliver ticketholders and workforce to/from venues
CP_036/01	Too many vehicles attempting to access Park/Ride or Park/Walk areas (excludes permit parking areas)

+ “Road Capacity Test”

+ Participation to

☐ Venue Simulations - Rehearsals

☐ Transport Table Top – Simulation

☐ “Transport Simulation”

☐ Main Operation Centre Simulation

☐ Games Readiness Exercise (with IOC, and external TOROC partners-suppliers-contractors)

+ Simulation (and Analysis) of critical traffic situations using SEMANTIC

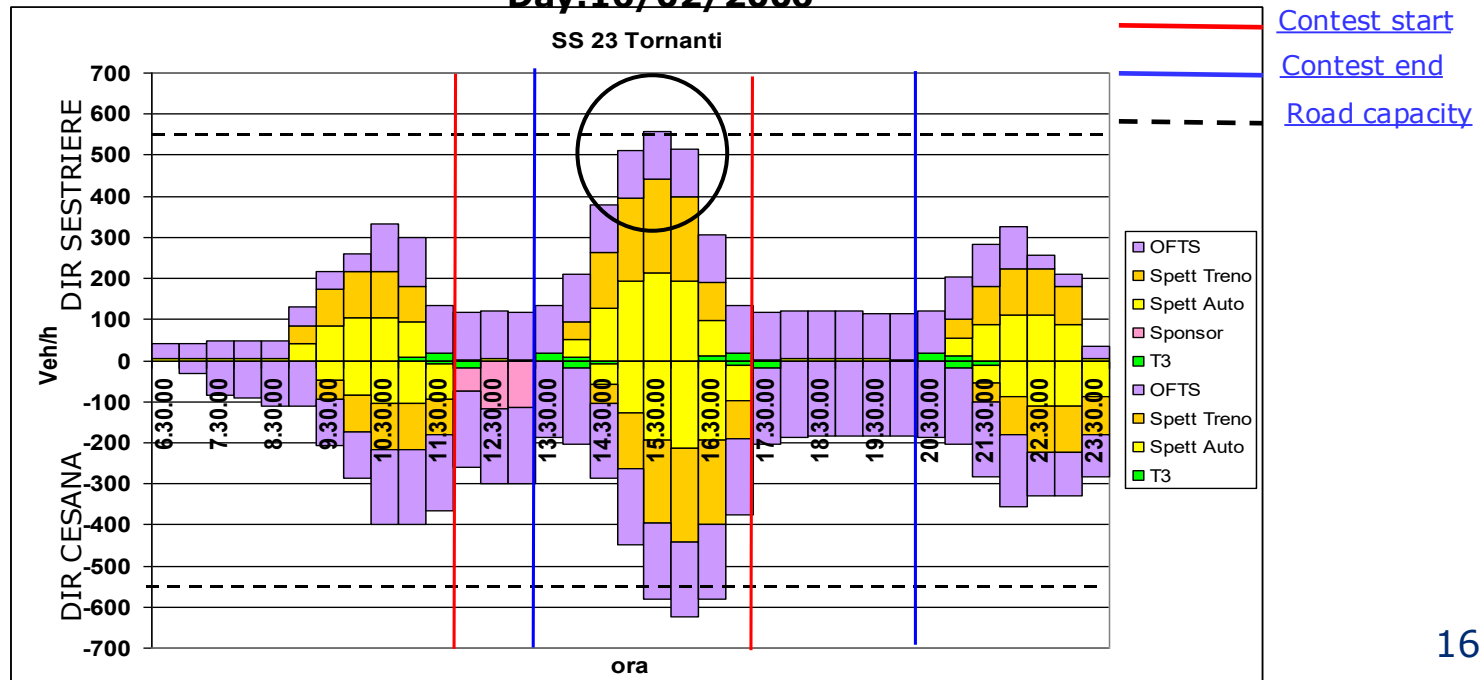
SEMANTIC

Decisions support system

“SEMANTIC is an integrator of functions and data”

- Each function manages its own information and data
- SEMANTIC integrates this (DATA BASE) and evaluates the impacts on the transport system (SIMULATOR)
- SEMANTIC highlights any criticality (Decision Support System) and makes the results available to the single functions (REPORTING)

Day:16/02/2006



Olympic Transport Services

T1

Allocated vehicle and driver

T2

Allocated vehicles and drivers

T3

Constituent transport system

T4

Constituent transport system

Allocated Vehicles

T5

Free public transport system (dorsale)

Sponsor Coach Program
Spectator transport system (mountain)

Olympic Clients & Transport Services

NOCs	<ul style="list-style-type: none"> • Athlete Transport Service (31st January – 28th February 2006) • Allocation of Vehicles, VAPPs and Drivers • Access to Free Public Transport, City (From 1st February) • Access to The Dorsale, Mountain (From 31st January) • Access to Olympic Family Mountain Service (27th January – 1st March 2006)
Media	<ul style="list-style-type: none"> • Media City Transport Service (27th January – 1st March 2006) • Olympic Family Mountain Service (27th January – 1st March 2006) • Access to VAPPs <ul style="list-style-type: none"> ➢ Press via Ratecard ➢ Broadcast via TOBO • Access to Free Public Transport (From 1st February)
IFs	<ul style="list-style-type: none"> • Allocation of Vehicles and VAPPs per sport discipline (with or without drivers) • Shuttle Service for IIHF and ISU • Access to Free Public Transport (From 1st February)
Olympic Family	<ul style="list-style-type: none"> • City - General vehicle pool and drivers (26th January – 28th February 2006) • Mountain – Olympic Family Mountain Service 27th January – 1st March 2006 • Allocations of Vehicles, VAPPs and Drivers, individual or group • Access to Free Public Transport (From 1st February)
Sponsors	<ul style="list-style-type: none"> • Access to Sponsor Coach Program • Access to VAPPs

CAR Fleet

✓ 1950 CARS:

Olympic Family, Staff, NOC, International Federations Transport

✓ 1050 RATE CARDS:

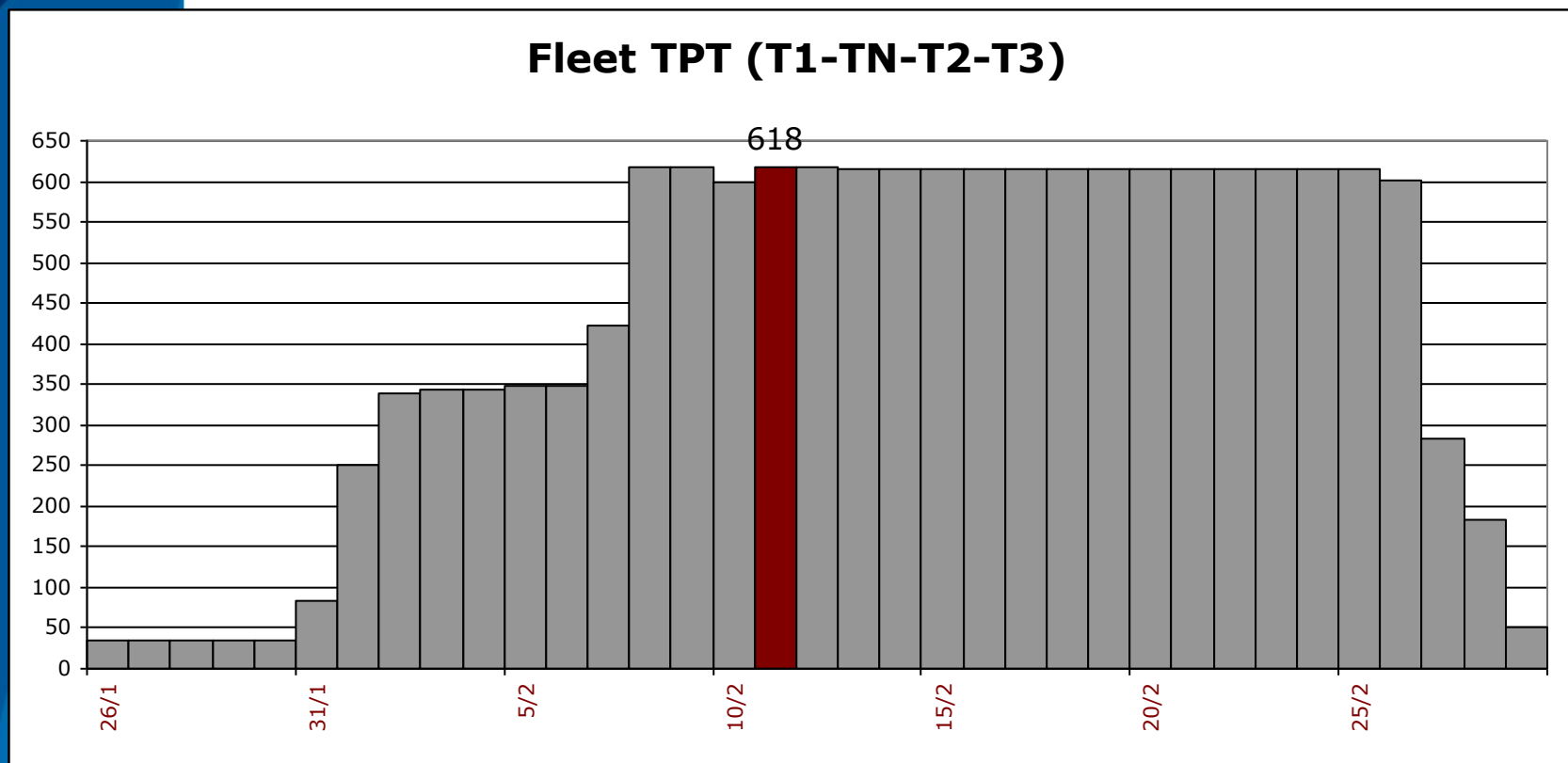
Rent service without driver to accredited people (service managed by Rent-a-Car companies)



Safe Driving Training for Transport Volunteers

Fleet Planning Numbers

Services per Day



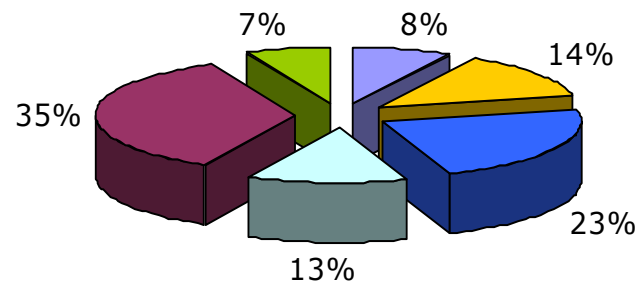
BUS Fleet

✓ **1200 BUSES & 250 MINIBUSES for:**

- Athletes and media transport (mountains and city)
- Spectators, staff, volunteers and contractors transport (mountains)
- Sponsor transport (mountains and city)

✓ **1183 Drivers Accommodated in TOROC accommodation**

- ❑ 603 in Mountain Area (369 in apartment, 234 in a dedicated village)
- ❑ 580 in City Area (424 in Media Villages, 156 in a dedicated village)

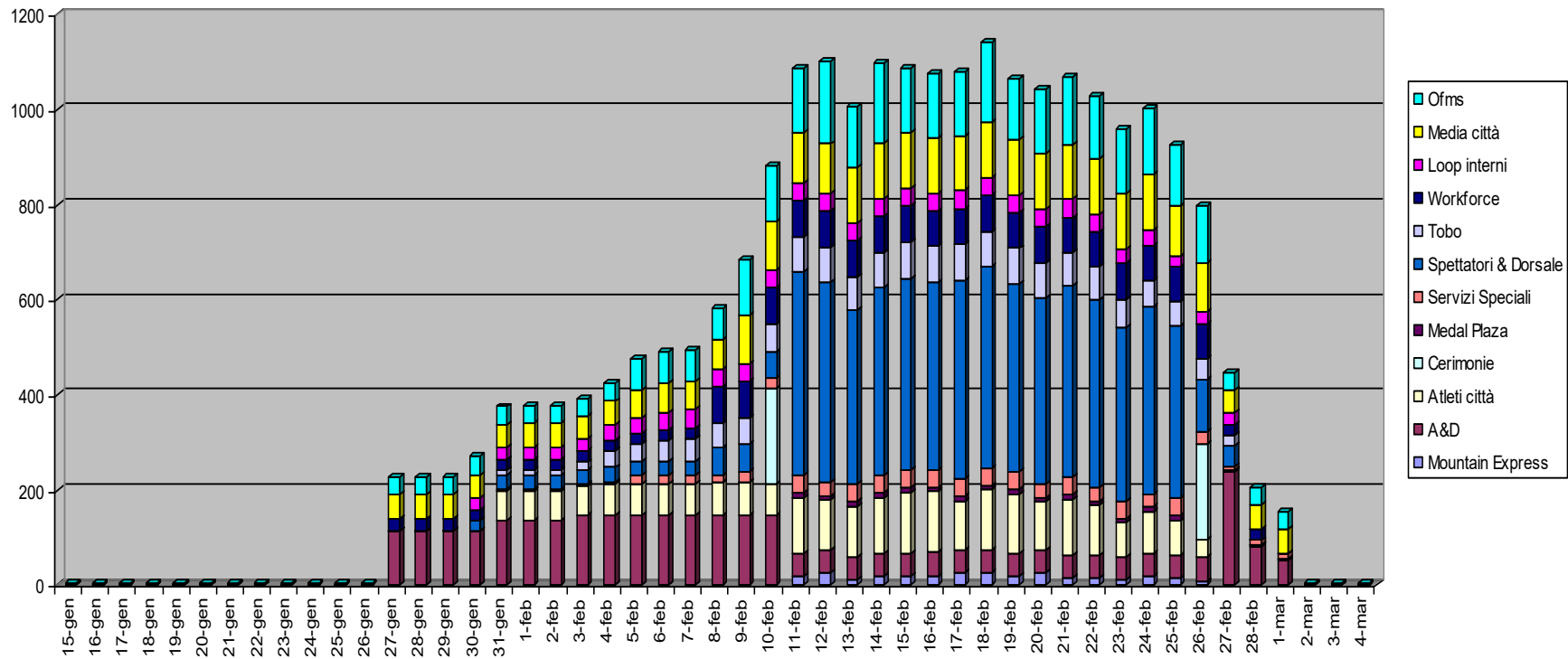


- Atleti città
- Atleti Montagna (Minibus)
- Media OF Montagna
- Media città
- Spettatori Montagna
- Workforce Montagna



Bus Planning Numbers

Numeri bus



Spectator Transport

How we have organised the services

Transport in the **URBAN AREA**

- In the urban area, transport services are provided by the GTT Public Transport network, improved by special dedicated services (X Lines)

Transport in the **MOUNTAIN AREA**

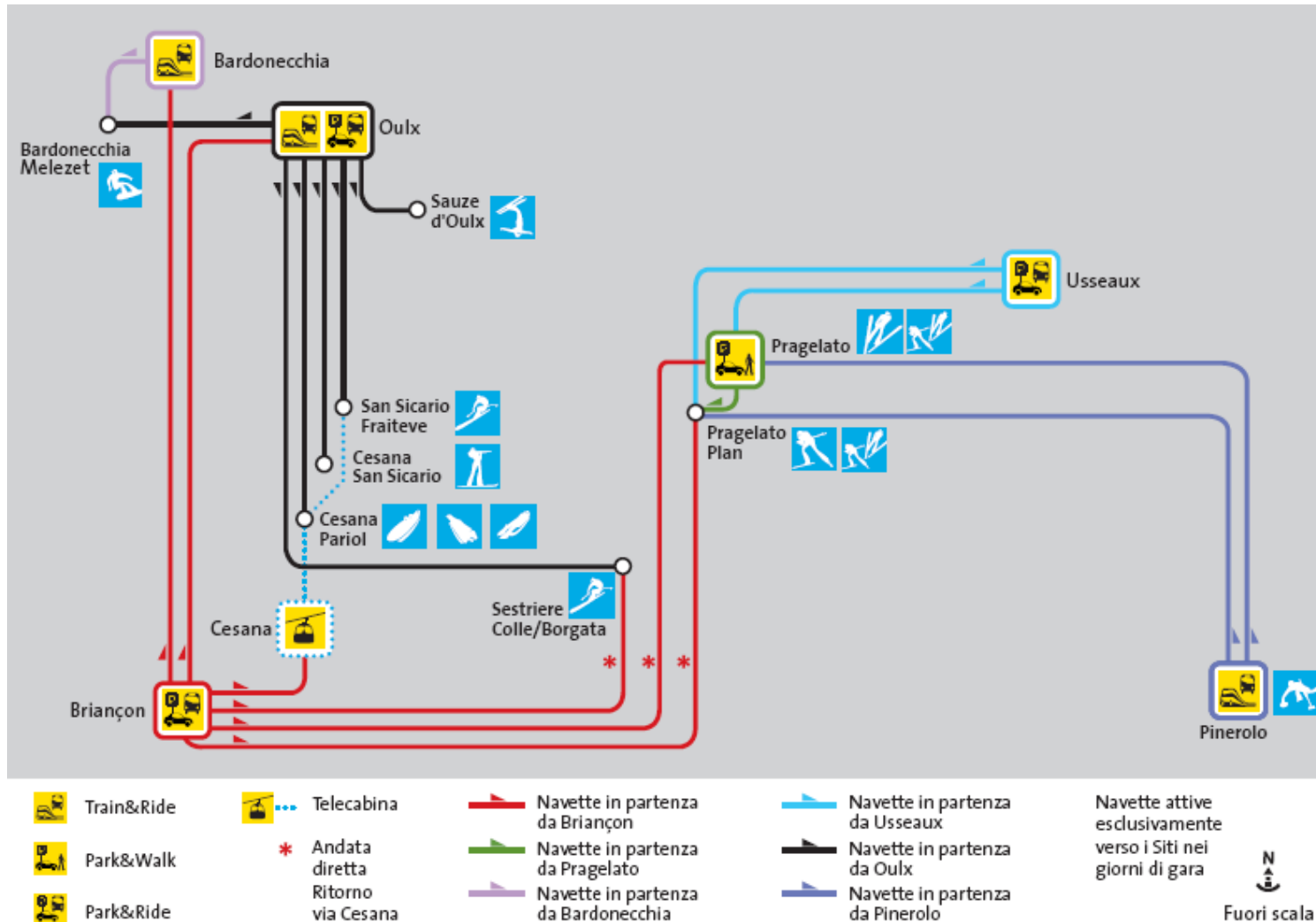
- A free mountain service will connect mountain sites in Games Time
- Dedicated shuttle services will serve interchange points (Park&Ride, Train&Ride, Hub)

Connections **CITY-MOUNTAIN AREA**

- A Train&Ride (special trains + shuttle buses) will ensure frequent dedicated connections to mountain competition venues

Mountain Spectator Transport

T&R/P&R/P&W Interchange System



P&R Details

Oulx P&R

Total capacity: 3000 cars

Average Utilization (per day): 660 cars (about 2000 pax)

Max. utilization: 21 Feb. (58.83%)

Pragelato-Usseaux P&R

Total capacity: 1500 cars

Average Utilization (per day): 435 cars (about 1300 pax)

Max. utilization: 18 Feb. (100% area Pragelato; 77% area Usseaux).

City P&R

Overall utilization: 47.751 cars (about 140.000 pax)

City Spectator Transport



11 Park&Ride:
6.900 car spaces

4 Train&Ride
(from North to South):

Torino Dora

Torino Porta Susa

Torino Porta Nuova

Torino Lingotto



City – Mountain Connections

Trains

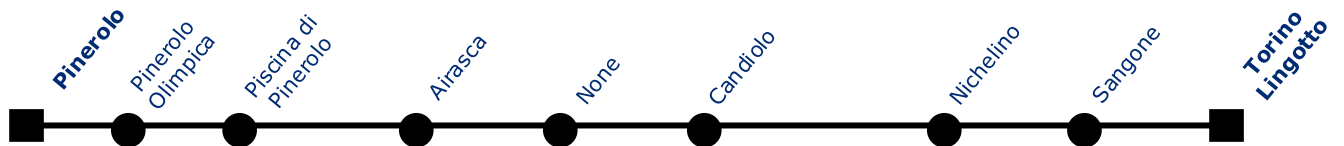
Torino– Bardonecchia



- **2 SPECIAL TRAINS/HOUR**

- First train leaves from Torino Porta Nuova at 05.40 am and arrives in Bardonecchia at 06.50 am
- Last train leaves from Bardonecchia at 01.05 am and arrives in Torino Porta Nuova at 02.30 am

Torino–Pinerolo



- **2 SPECIAL TRAINS/HOUR**

- First train leaves from Torino Lingotto at 04.30 am and arrives in Pinerolo at 05.15 am
- Last train leaves from Pinerolo at 00.50 am and arrives in Torino Lingotto at 01.35 am



City – Mountain Connections

Roads & Parking

Torino–Oulx (Val di Susa)

- Ring-road (Tangenziale)+ A32 highway with non-stop flow at Bruere junction, Avigliana and Salbertrand
- Parking (3,000 car places) in Oulx with straight access to/from A32 highway; parking place (18€ per day); possible to book in advance

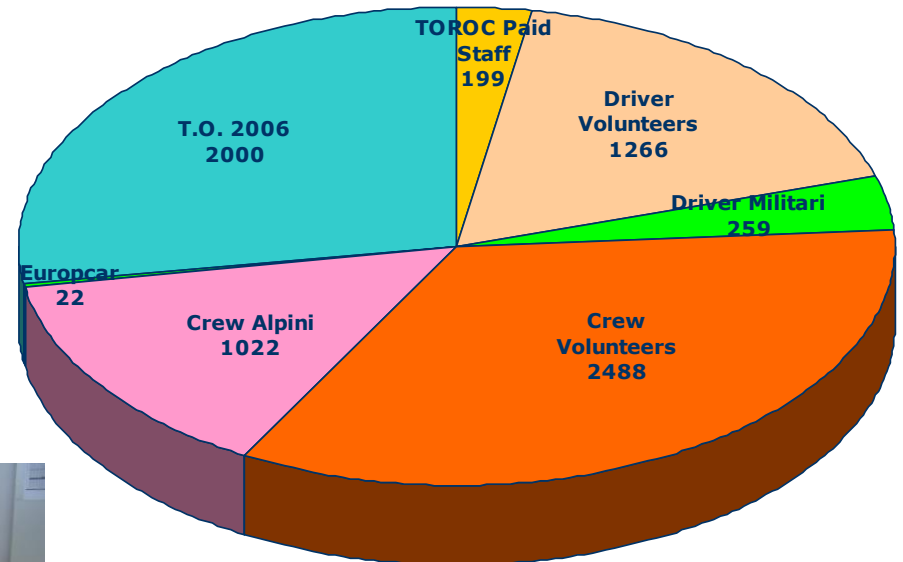
Torino–Usseaux-Pragelato (Val Chisone)

- Ring-road (Tangenziale)+ A55 highway+ Variante di Porte
- Parking (1,000 car places) in Pragelato (1.000 car places) and in Usseaux (1,000 car places); parking place (18€ per day); possible to book in advance
- “First-in first-out” parking with road filters support and SR23 (road Pinerolo-Sestriere) closure

Transport Workforce

✓ Almost 7500 workforce comprising:

- 4573 Volunteers (planning)
- Real data: about 3700
- 205 Paid Staff
- 250 Military + other professional organisations
- circa 2500 Contractors



Workforce Transport

With a Workforce Accreditation (Volunteers & Paid staff) you can travel **for free** during your service time on:

In Torino:



Public Transport lines (GTT) and Special X Lines dedicated to the Olympic Games in the city



Province of Torino Public Transport lines (SADEM e SAPAV).

Out of Torino:



Olympic Transport services in mountain area (WKF lines and Dorsale Olimpica Montana);



Trains in the Olympic area (special lines Torino-Oulx-Bardonecchia and Torino-Pinerolo) and all regional trains in Piemonte

Transport

Information and Communication

❑ Olympic Family Publications

- Athletes Guide
- Media Transport Guide
- Olympic Family Guide
- Sport Specific Publications
- IF Technical Guides
- Transport Drivers Guide + Maps
- Transport Support Crew Guide
- VAPPs Guide + Maps
- Transport Maps
- INFO2006

❑ Spectator and Public Publications

- Website
- Spectator Guide
- Spectator Pocket-guide
- Spectator Maps
- Monitor
- Press, Radio, Web campaign launched




XX Giochi Olimpici Invernali 10-26 Febbraio 2006

torino 2006

Passion lives here

MANCANO 91 GIORNI!

Effettua la ricerca Cerca

Volontari | Scuole | Tedorori | Giornalisti | Sponsor | Licenziatari

English | Français

VIENI A TORINO2006 | GARE E PROGRAMMA | SPORT E ATLETI | SPIRITO OLIMPICO | DIETRO LE QUINTE

HOME > VIENI A TORINO 2006 > Come arrivo a...

Ospitalità

Come arrivo a...

Torino

Siti Olimpici

Muoversi in Città

Muoversi in Montagna

Mappe

Arrivare in tempo

Accessi e divieti

Impianti di gara

Informazioni utili

Biglietti

Accessibilità

Olimpiadi della cultura

Turismo

TORINO2006 / TICKETS

FIAMMA OLIMPICA

NOI2006

KIDS VILLAGE

OLYMPICSTORE

E' tempo di Giochi, lasciati trasportare!

Il Comitato Organizzatore, in stretta collaborazione con le aziende di trasporti del territorio, si è attivato per garantire a tutti la **possibilità di raggiungere i siti di gara** nella massima comodità ed efficienza possibili.

Un servizio di trasporti pubblici potenziato per l'occasione accompagnerà gli spettatori presso i campi di gara, guiderà i turisti nei luoghi di interesse artistico, aiuterà i residenti a muoversi con facilità nelle due settimane di euforia Olimpica.

Neve e Gliz

Consigli utili e cose da ricordare

- Controlla l'ora d'inizio della gara sul tuo biglietto.
- Pianifica bene il tuo viaggio.
- Muoviti con largo anticipo. (vedi la sezione [Arrivare in tempo](#))
- Usa i trasporti pubblici.

Ricorda che **non è possibile parcheggiare** auto private e bus turistici nei pressi dei siti di gara. I sistemi a tua disposizione per recarti agli impianti di gara sono tre:

- il **Train&Ride** (treno + navette o mezzi pubblici)
- il **Park&Ride** (parcheggio d'interscambio + navette o mezzi pubblici)
- la **Dorsale Olimpica Montana**

Per motivi di sicurezza alcuni tratti di strada montani saranno **chiusi al traffico** durante i Giochi ([Qui i dettagli su Accessi e Divieti](#))

CALENDARIO GARE

Febbraio 2006

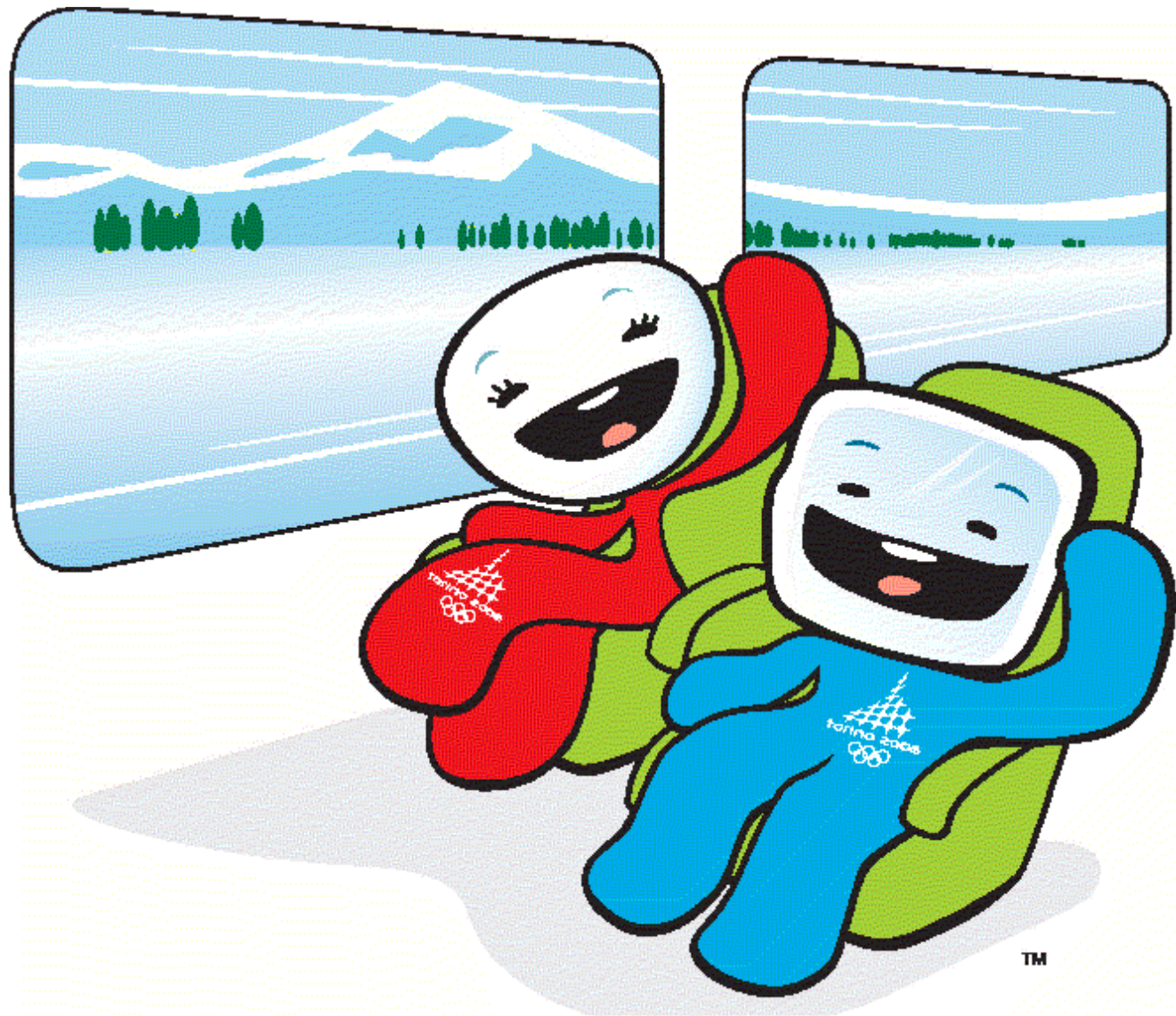
l	m	g	v	s	d	
		1	2	3	4	5
6	7	8	9	10	11	12
13	14	15	16	17	18	19
20	21	22	23	24	25	26
27	28					

Scarica il calendario

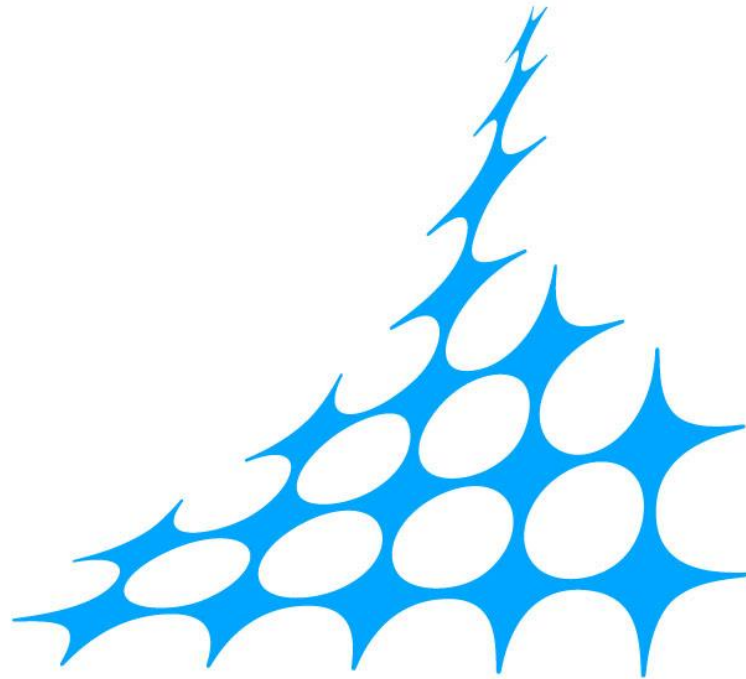
APPROFONDIMENTI

- Trasporti pubblici e traffico
- Trenitalia
- I filtri alla circolazione
- La Dorsale Olimpica Montana

BIGLIETTI



E' tempo di Giochi: lasciati trasportare!
It's Games-time: be transported!



torino 2006

TM

